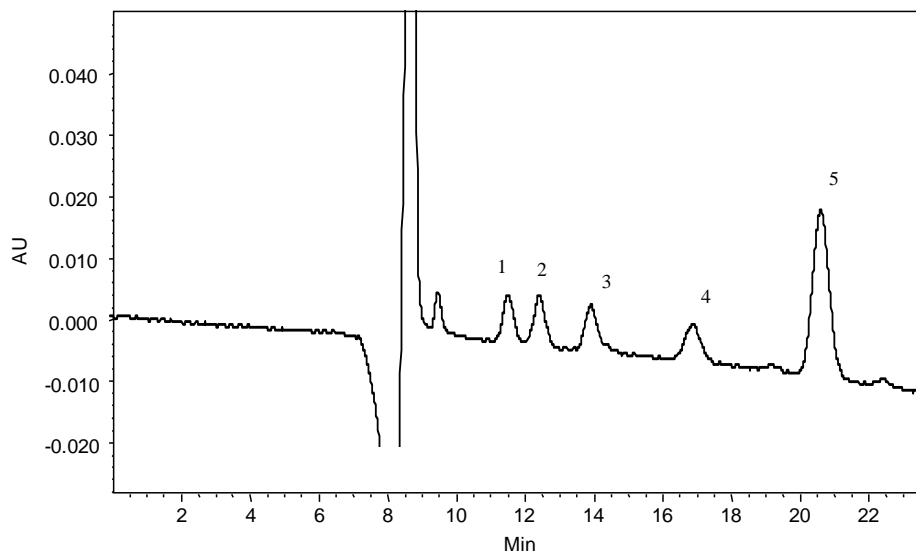




### Analysis of Carbohydrates in Beer on Carbomix<sup>®</sup> Ca (5 $\mu$ m, 5%, 7.8x300 mm)



Column: Carbomix<sup>®</sup> Ca-NP5 (5  $\mu$ m, 8% crosslinkage, 7.8x300 mm)  
Mobile Phase: water  
Temperature: 85 °C  
Flow Rate: 0.4 mL/min  
Detection: UV 192 nm  
Injection Volume: 2  $\mu$ L  
Samples (6 mg/mL in H<sub>2</sub>O for each): 1. Maltotetraose, 2. Maltotriose, 3. Maltose, 4. Glucose, 5. Fructose.

Keywords: Carbohydrate, Carbomix, calcium form, beer, maltotetraose, maltotriose, maltose, glucose, fructose