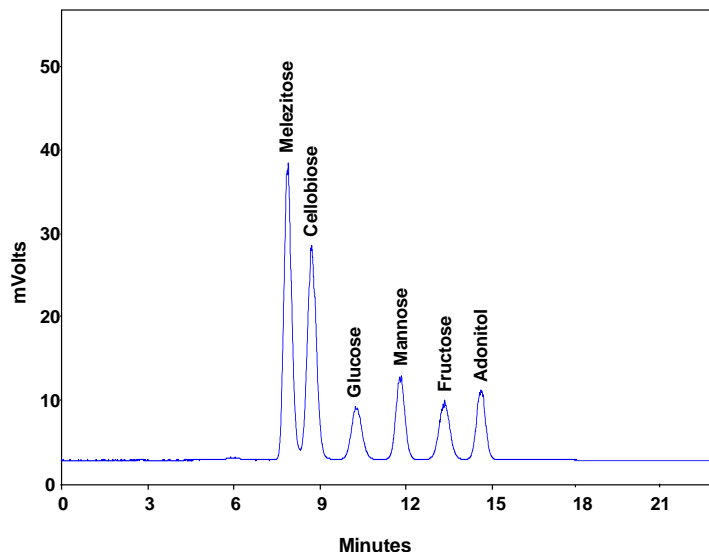
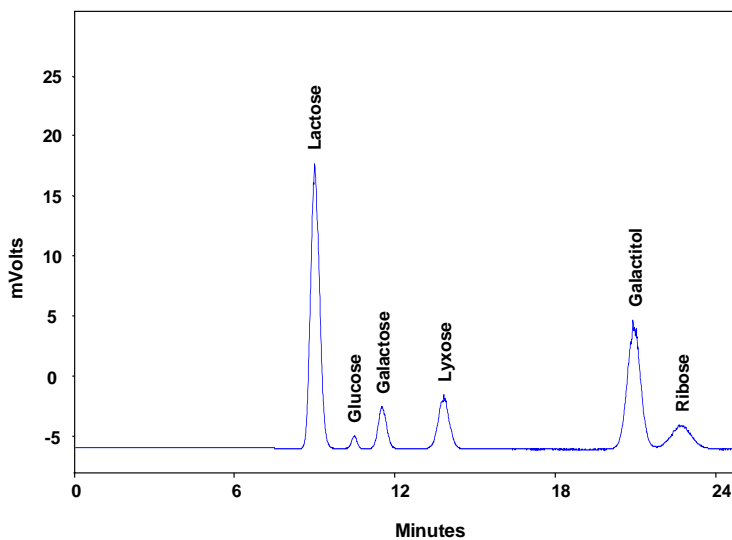




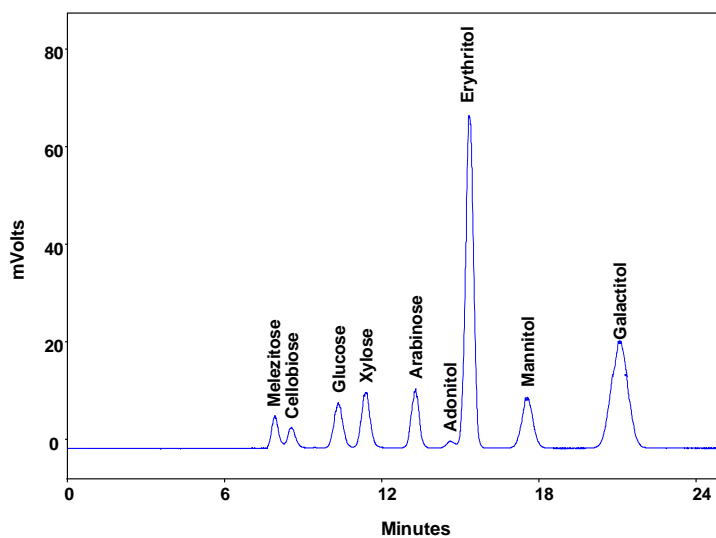
Analysis of Sugar mixture on Carbomix[®] Ca-NP10 (10 μ m, 8%, 7.8x300 mm)



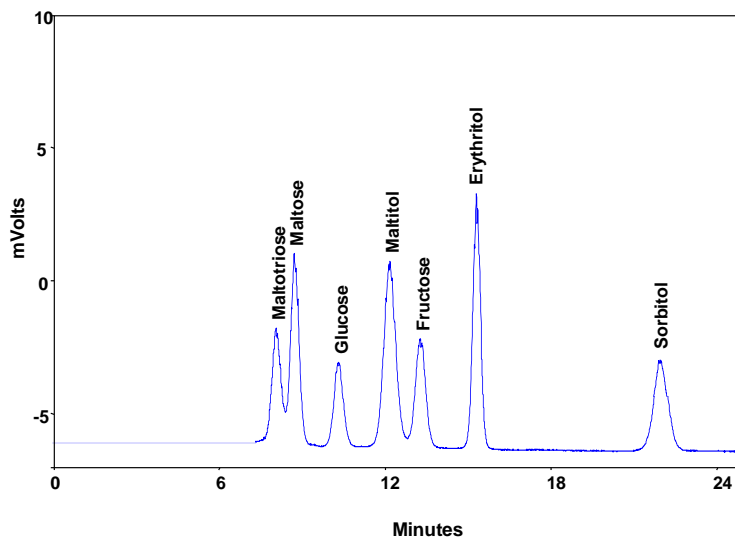
Column: Carbomix[®] Ca-NP10:8% (7.8*300 mm)
Mobile Phase: H₂O
Flow Rate: 0.6 mL/min
Temperature: 85 °C
Detection: ELSD
Injection Volume: 0.5 μ L
Samples: melezitose, cellobiose, glucose, mannose, fructose, adonitol



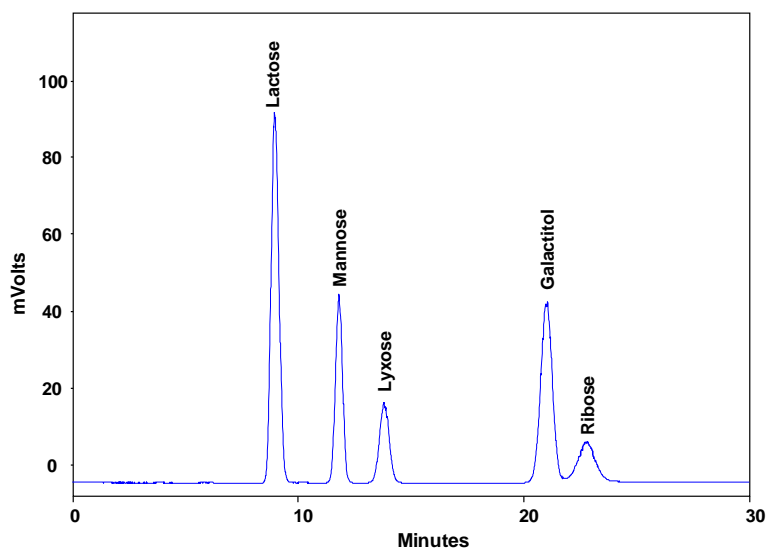
Column: Carbomix[®] Ca-NP10 (10 μ m, 8%, 7.8x300 mm)
Mobile Phase: H₂O
Flow Rate: 0.6 mL/min
Temperature: 85 °C
Detection: ELSD
Injection Volume: 2 μ L
Samples: lactose, glucose, galactose, lyxose, galactitol, ribose



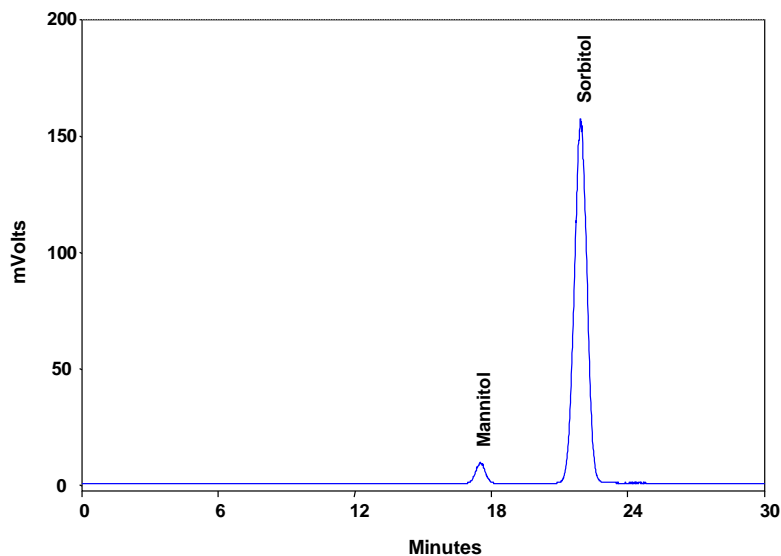
Column: Carbomix[®] Ca-NP10 (10 μ m, 8%, 7.8x300 mm)
Mobile Phase: H₂O
Flow Rate: 0.6 mL/min
Temperature: 85 $^{\circ}$ C
Detection: ELSD
Injection Volume: 5 μ L
Samples: melezitose, cellobiose, glucose, xylose, arabinose, erythritol, mannitol, galactitol



Column: Carbomix[®] Ca-NP10 (10 μ m, 8%, 7.8x300 mm)
Mobile Phase: H₂O
Flow Rate: 0.6 mL/min
Temperature: 85 $^{\circ}$ C
Detection: ELSD
Injection Volume: 2 μ L
Samples: maltotriose, maltose, glucose, maltitol, fructose, erythritol, sorbitol



Column: Carbomix[®] Ca-NP10 (10 μ m, 8%, 7.8x300 mm)
Mobile Phase: H₂O
Flow Rate: 0.6 mL/min
Temperature: 85 $^{\circ}$ C
Detection: ELSD
Injection Volume: 5 μ L
Samples: lactose, mannose, lyxose, galactitol, ribose



Column: Carbomix[®] Ca-NP10 (10 μ m, 8%, 7.8x300 mm)
Mobile Phase: H₂O
Flow Rate: 0.6 mL/min
Temperature: 85 $^{\circ}$ C
Detection: ELSD
Injection Volume: 1 μ L
Samples: mannitol, sorbitol

Keywords: Carbohydrate, Carbomix, calcium form, ELSD, sugar mixture, sugar alcohols