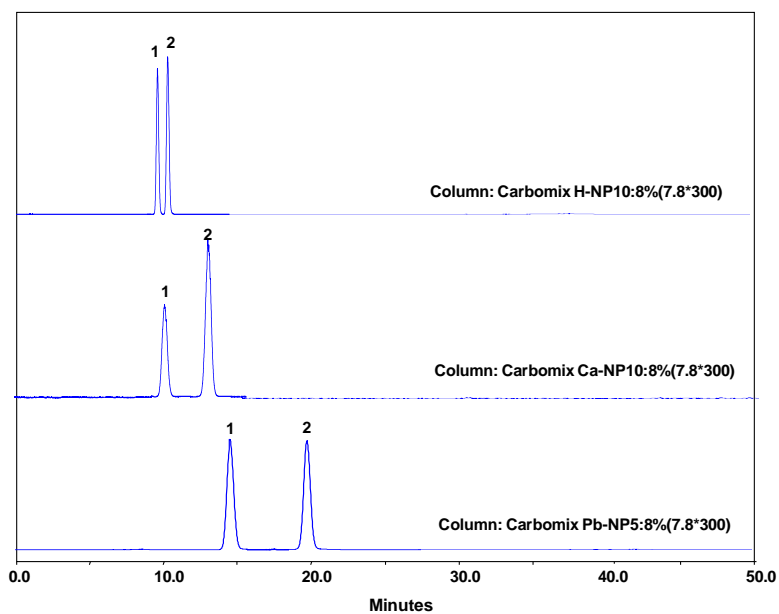




Analysis of glucose and fructose on Carbomix[®] H/Ca/Pb (7.8x300 mm)



Columns: Carbomix[®] H-NP10; Carbomix[®] Ca-NP10; Carbomix[®] Pb-NP5: (8% crosslinking, 7.8x300 mm)

Mobile Phases: TFA solution, pH 2.5 for Carbomix[®] H; H₂O for Carbomix[®] Ca and Carbomix[®] Pb

Flow Rate: 0.6 mL/min

Detection: ELSD

Samples: 1. glucose; 2. fructose

Keywords: Carbohydrate, Carbomix, ELSD, glucose and fructose, ionic form