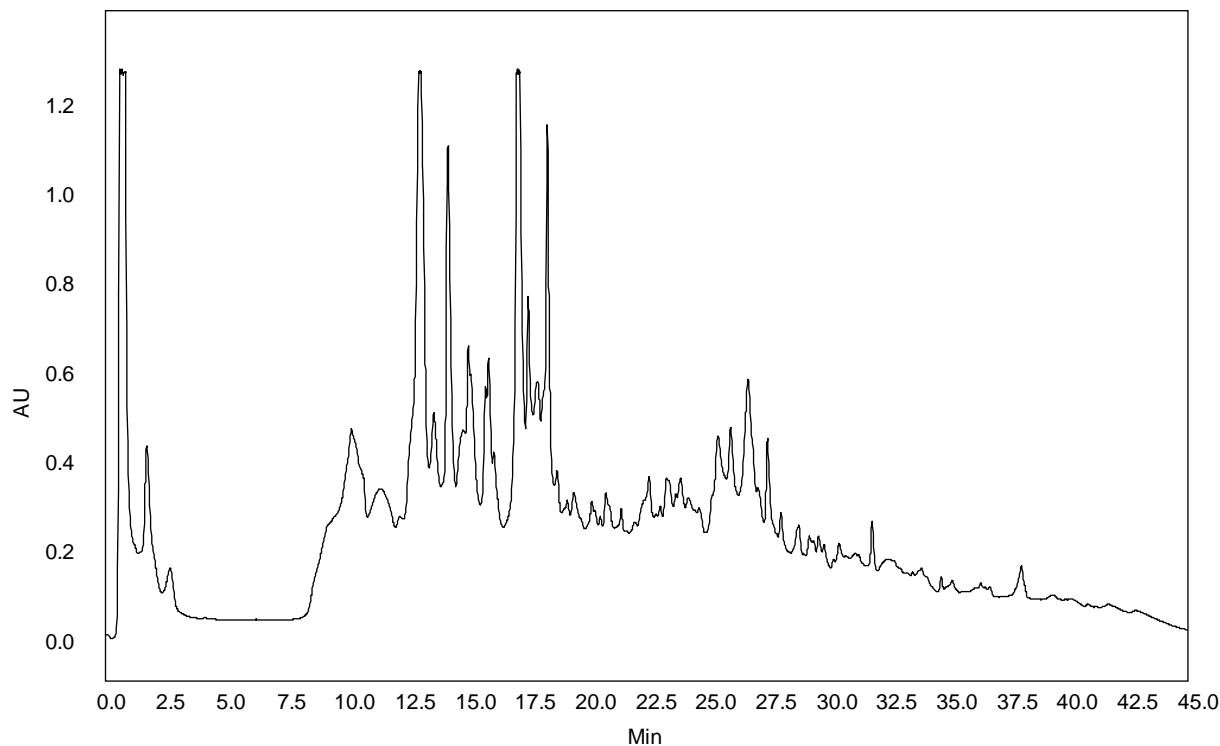




Separation of *Yeast Lysate* on Proteomix[®] SAX-NP3 (3 μ m, 4.6x50 mm) – High Peak Capacity



Column: Proteomix[®] SAX-NP3 (3 μ m, 4.6x50 mm)
Mobile Phases: A: 20 mM Tris, pH 9.0; B: A + 0.5 M NaCl
Gradient: 0-100%B (30 min)
Flow Rate: 0.5 mL/min
Detection: UV 280 nm
Temperature: 25 °C
Concentration: 2.5 mg/mL
Injection Volume: 40 μ L
Sample: *Yeast Lysate*

(Courtesy of Prof. Fred Regnier, Purdue University)

Keywords: Ion-exchange, Proteomix, strong anion exchange, *E. coli*, Lysate, high loading capacity