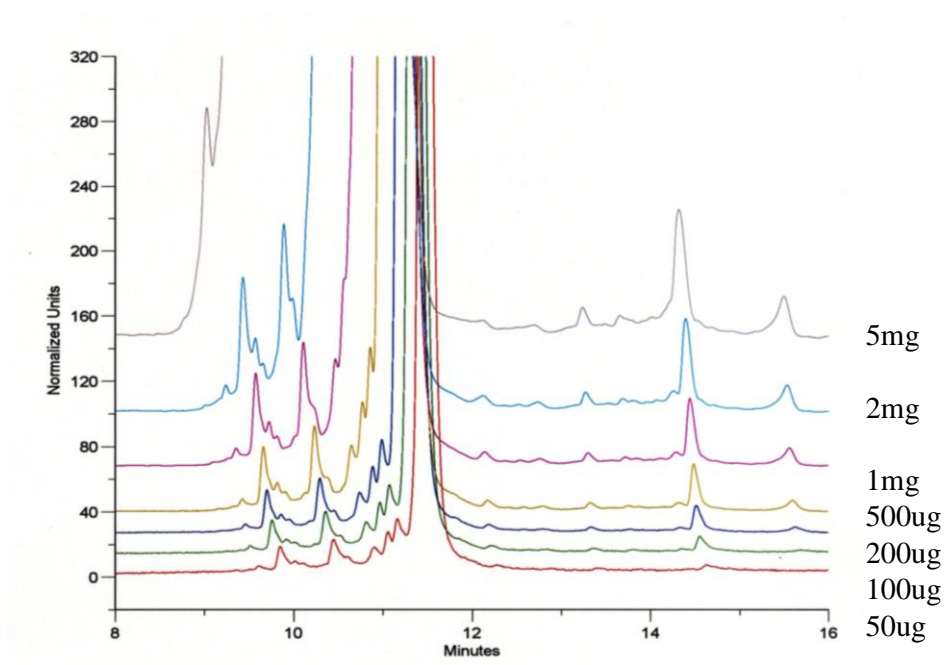




Loading Capacity of RNaseA on Proteomix® SCX-NP3 (3 μ m, 4.6x50 mm)



Column: Proteomix® SCX-NP3 (3 μ m, 4.6x50 mm)
Mobile Phase: 10 mM phosphate buffer, pH 6.0
Gradient: 0-1.0M NaCl (20 min)
Flow Rate: 1.0 mL/min
Temperature: 25 °C
Detection: UV 280 nm
Injection Volume: 100 μ L
(Courtesy of Miyako Kawakatsu, M&S Instruments, Inc.)

Keywords: Ion exchange, Proteomix, strong cation exchange, loading capacity, Ribonuclease A