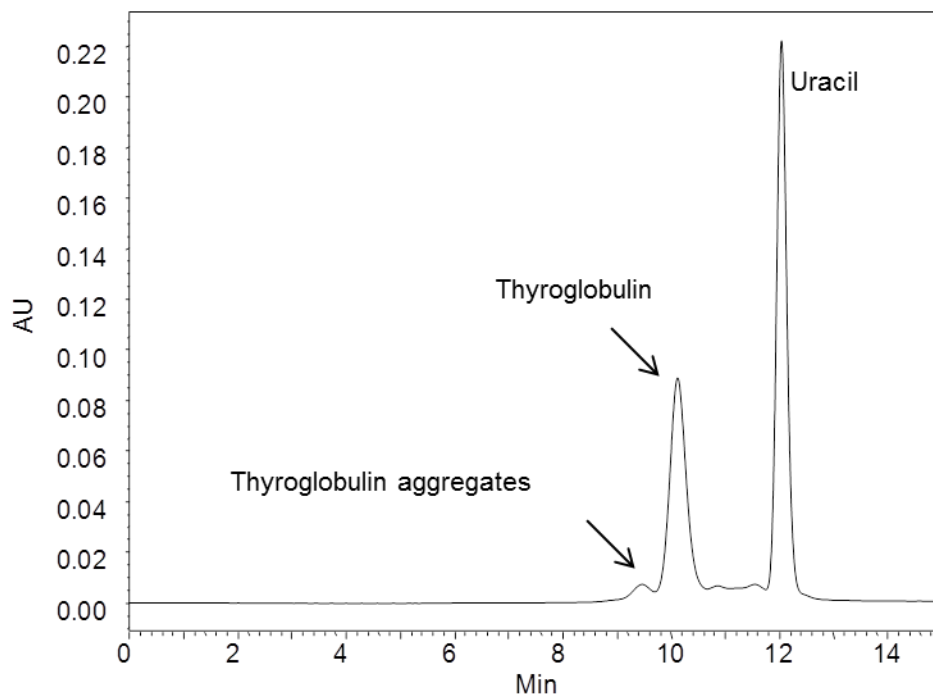




Separation of Thyroglobulin on SRT[®]-1000



Column: SRT[®] SEC-1000 (5 μ m, 1000 \AA , 4.6 x 300 mm)
Mobile Phase: 150 mM phosphate buffer, pH 7.0
Flow Rate: 0.35 mL/min
Injection vol: 3 μ L
Temperature: Ambient
Detection: UV 214 nm
Samples: 1. Thyroglobulin (670kD) 1 mg/mL; 2. Uracil (120D), 0.1 mg/mL

Keywords: size exclusion, SRT, SRT 1000, protein, thyroglobulin, aggregate