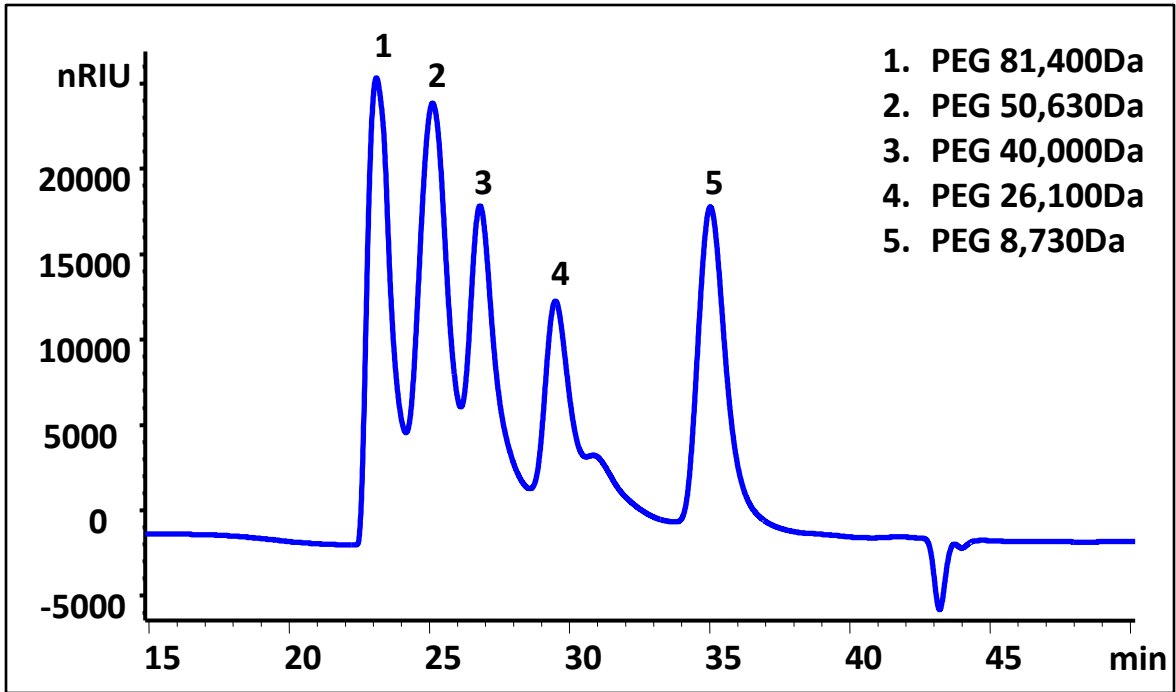


### PEG separation on two Zenix SEC-300 7.8x300mm columns in Tandem



Columns:	2 Zenix SEC-300 3 $\mu$ m, 300 $\text{\AA}$ , 7.8x300mm connected in tandem
Mobile Phase:	150 mM Sodium Phosphate Buffer pH=7.0
Flow Rate:	0.5 mL/min
Temperature:	25 $^{\circ}$ C
Detection:	Refractive Index at 30 $^{\circ}$ C
Injection Volume:	10 $\mu$ L
Samples:	1. PEG 81,400Da (2mg/mL) 2. PEG 50,630Da (2mg/mL) 3. PEG 40,000Da (2mg/mL) 4. PEG 26,100Da (2mg/mL) 5. PEG 8,730Da (2mg/mL)